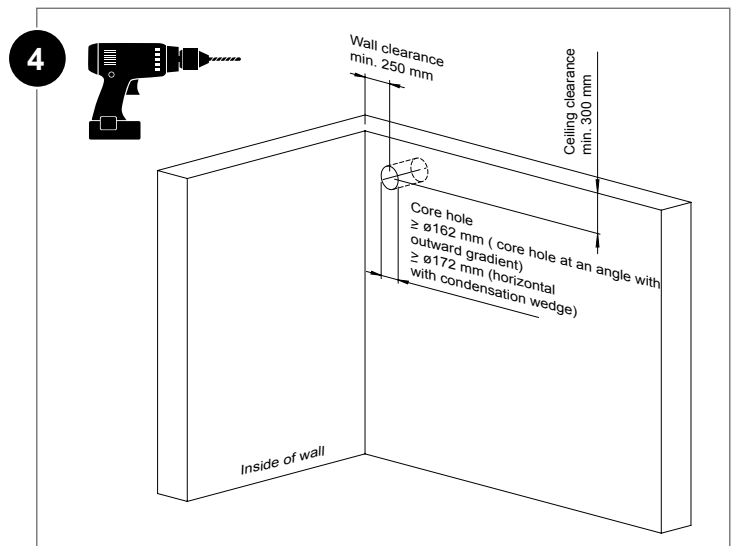
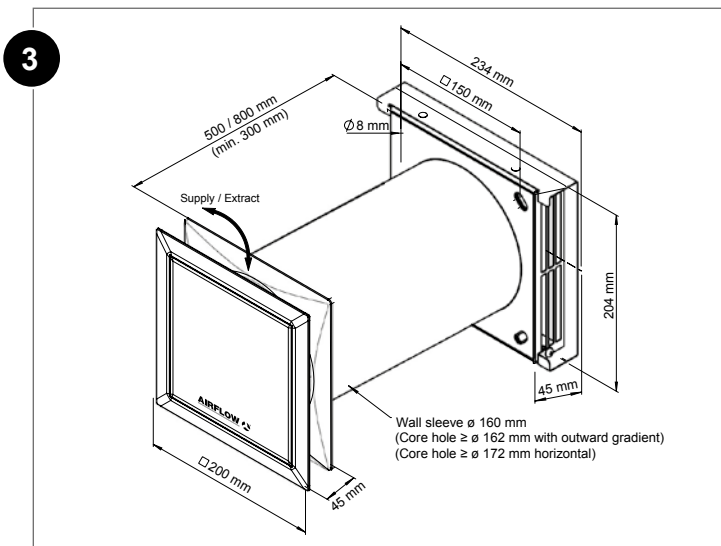
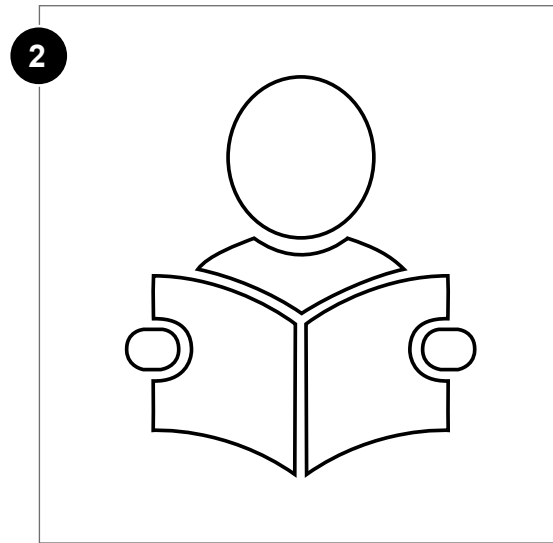
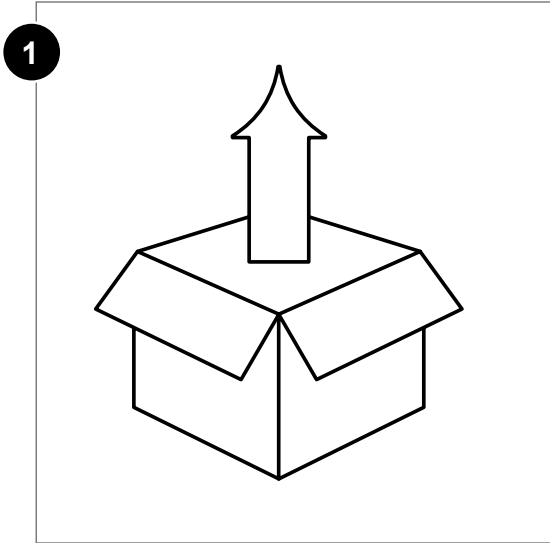


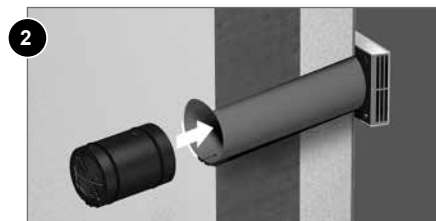
## Read the instructions before installation!



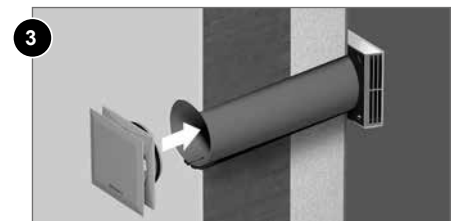
### QUICK GUIDE



**Step 1**  
Install wall sleeve and external panel. Once the wall installation sleeve has been fixed in the drilled core hole (its length can be cut to min. 300 mm), the external panel can be mounted to the finished facade.



**Step 2**  
Insert unit and connect it electrically\*. Once the construction or renovation is complete, the unit can be inserted in the wall sleeve and connected electrically. \*This product should only be installed by a skilled competent person in order to comply with the appropriate Building Regulations or Standards in place.



**Step 3**  
Insert internal grille. Once the fan unit has been installed, the internal grille panel with integrated filter can be attached. This can be performed easily without any tools.

**STEP-BY-STEP GUIDE**



**1.** Insert wall sleeve in the wall hole. Make sure the condensate wedge is centrally aligned with the cable conduit and located at the bottom.



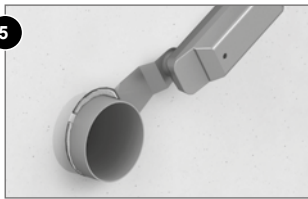
**2.** Fix the wall sleeve on the inside and outside of the wall using the installation wedges, supplied in the box.



**3.** Fill in the gap between the core hole and the wall sleeve with insulation foam, including the inside and outside of the wall. Allow time to dry and remove the wedges and excess foam.



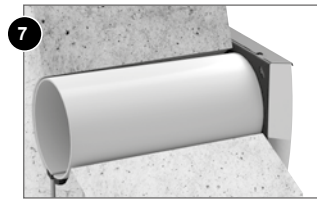
**4.** Seal the gap to become water proof.



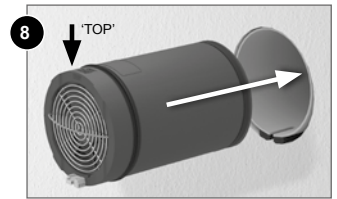
**5.** Cut the excess wall sleeve length, wedges and foam flush to the outside wall using an oscillating saw blade tool.



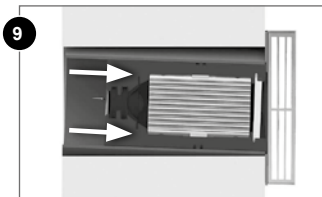
**6.** Seal the gap (same as in image 4) and even off the outside wall surface.



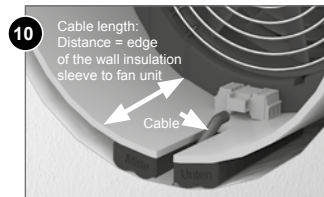
**7.** Mount the external grille. Detailed instructions are provided in the *UnoHab* external grille manual, number 80001043 which can be downloaded at [airflow.com](http://airflow.com)



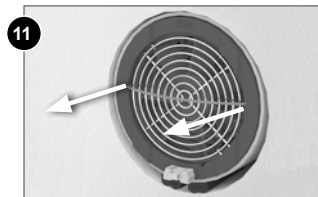
**8.** From the internal wall side, slide the unit in the wall sleeve. Make sure the 'TOP' marking is located on the top as indicated.



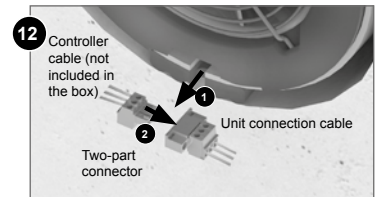
**9.** Carefully insert the *UnoHab* into the sleeve. Do not force and make contact with the external grille. This ensures a free path for the air to be exhausted.



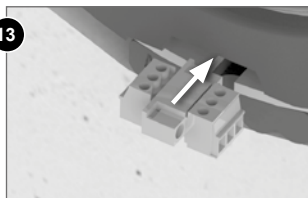
**10.** Measure and cut the cable to length.



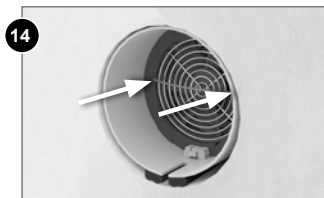
**11.** Pull the unit out so the front of the unit is flush with the hole, before making the electrical connection.



**12.** Wire the controller cable wires as per the wiring diagrams which can be found in the *UnoHab* unit manual, number 80000777 which can be downloaded at [airflow.com](http://airflow.com)



**13.** Plug in the two-part connector. Stow the connection cable in the allocated EPP shell space.



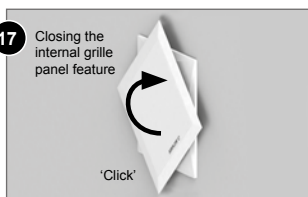
**14.** Push the unit back until it stops into the external grille protection guard. (see point 9 for guidance).



**15.** Insert the internal grille. Make sure it is the correct way up, indicated by the Airflow logo.



**16.** The internal grille panel is fully opened when delivered and once inserted correctly, the installation of one *UnoHab* unit is now complete.



**17.** If required, the panel can also be closed by completing two full turns clockwise until it 'Clicks'